



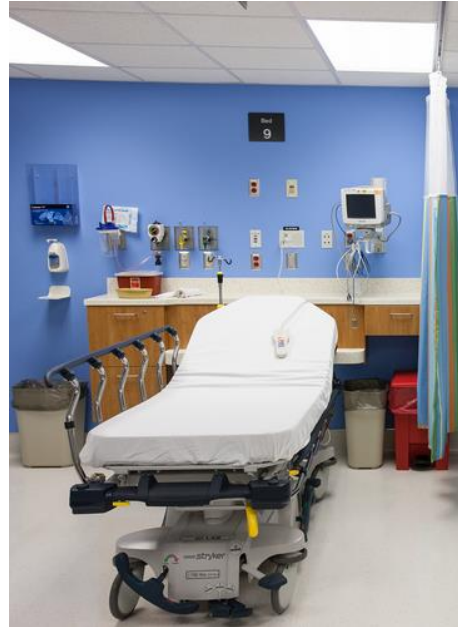
A Learning Health Network of One: How Medical Trainees can use the Electronic Health Record for Clinical Feedback

Samuel Yang, MD, MS & Jennifer Lee, MD & Juan
Chaparro, MD

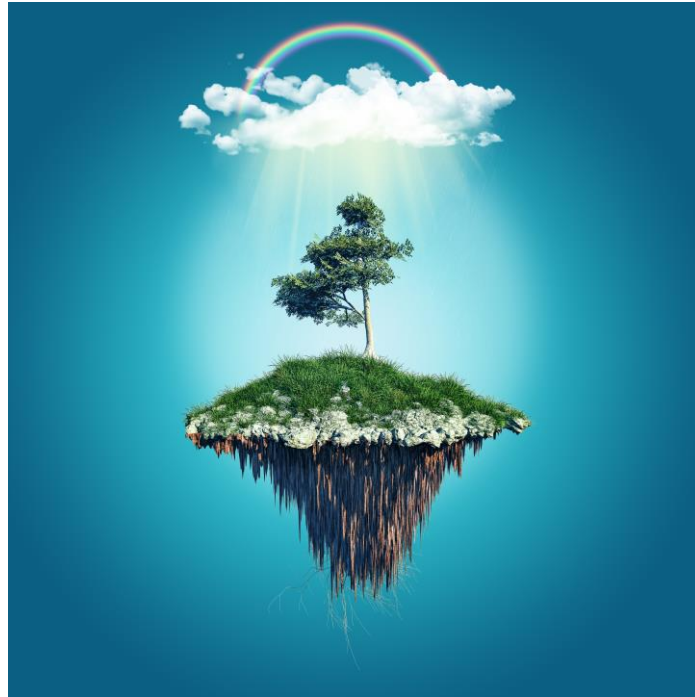
The EHR for Clinical Feedback



The EHR for Clinical Feedback



The EHR for Clinical Feedback



The EHR for Clinical Feedback



The EHR for Clinical Feedback

PGY-1

BLOCK	1	2	3	4	5	6
	IM	IM	IM	Peds	Peds	Peds
	MICU	Gen Med	Heme	ID/General	Heme/Onc	Acute Care
7	8	9	10	11	12	13
IM	IM	IM	Peds	Peds	Peds	Peds
Heart	Night Flt	Elect	Pulm/General	NICU	Well Baby Nursery	Subspecialty Ward

The EHR for Clinical Feedback



“Medicine is learned by the bedside and not in the classroom. Let not your conceptions of disease come from words heard in the lecture room or read from the book. See, and then reason and compare and control. But see first.”

What is Clinical Feedback?

“Without
Feedback,
It’s a Win”



The EHR for Clinical Feedback



The EHR for Clinical Feedback

Permitted Uses and Disclosures

Permitted Uses and Disclosures. A covered entity is permitted, but not required, to use and disclose protected health information, without an individual's authorization, for the following purposes or situations: (1) To the Individual (unless required for access or accounting of disclosures); (2) Treatment, Payment, and Health Care Operations; (3) Opportunity to Agree or Object; (4) Incident to an otherwise permitted use and disclosure; (5) Public Interest and Benefit Activities; and

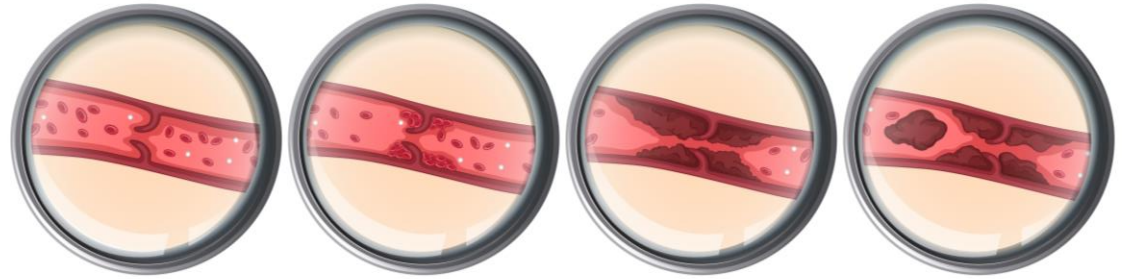
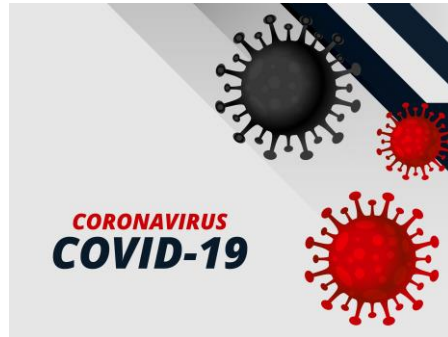
The EHR for Clinical Feedback



Medical Care

Duis aute irure dolor in reprehenderit in voluptate velit esse cillum dolore eu fugiat nulla pariatur. Excepteur sint occaecat cupidatat non proident, sunt in culpa qui officia deserunt.

The EHR for Clinical Feedback



<https://www.freepik.com/free-photos-vectors/background>

The EHR for Clinical Feedback



The EHR for Clinical Feedback



The EHR for Clinical Feedback





Rule #1
**Have a direct
clinical
relationship
with a patient**

Rule #2

Have a clinical question

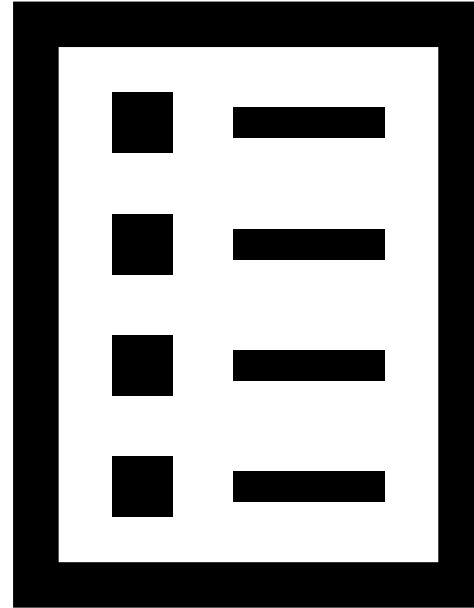




Rule #3
Have an
endpoint to
your question.

Rule #4

Maintain a
patient list
within the EHR



The EHR for Clinical Feedback

